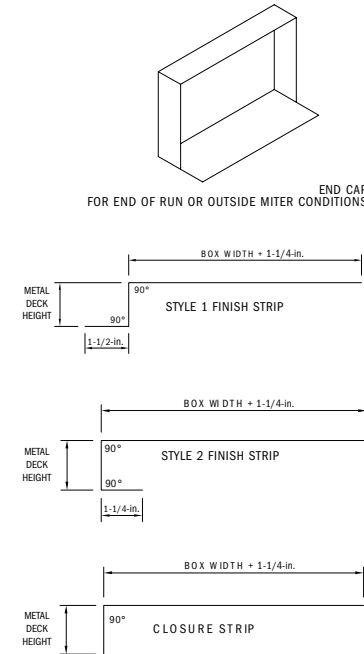
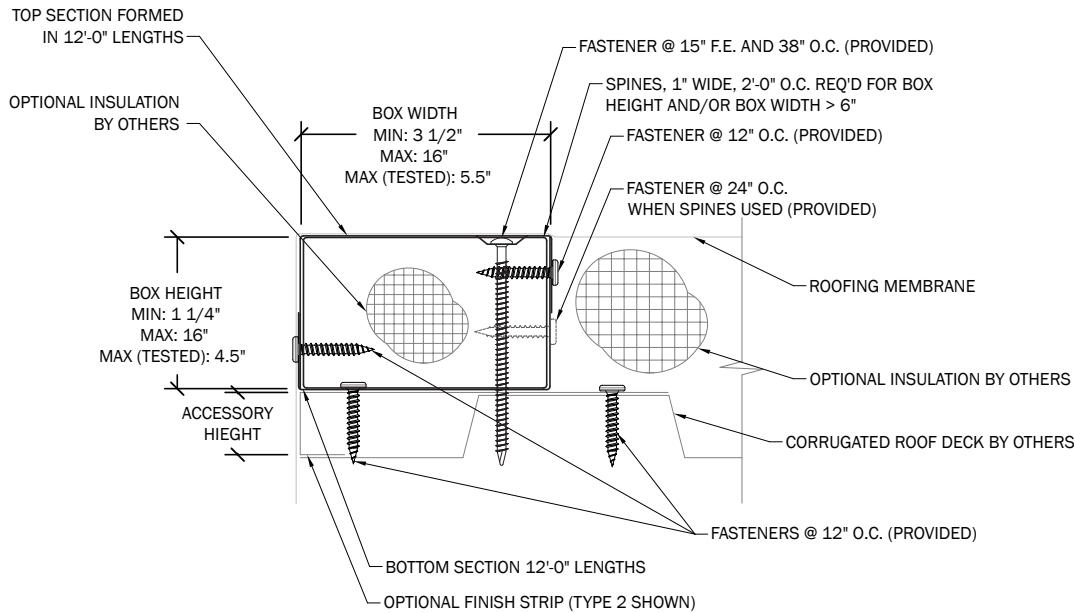


## EDGEBOX RI

### WOOD NAILER ALTERNATIVE

## NOTES

- Pre-drill with 3/16" in. drill for masonry conditions
- Product should be installed per provided installation instructions
- Finish and closure strips are only used with metal deck applications
- 3" height maximum for use with a coping product on a parapet wall
- ANSI/SPRI/FM 4435/ES-1 Test Pressure up to 911 psf (Vertical) 526 psf (Horizontal)



## DIMENSIONS

\_\_\_\_\_ Box Width (In Inches)

\_\_\_\_\_ Box Height (In Inches)

## MATERIALS

20 ga. Galv. Steel

## SUBSTRATE

If substrate is not given, wood fasteners will be provided.

- Metal (\_\_\_\_\_ Metal Deck Height in Inches)
- Existing Wood Nailer
- Masonry

## QUANTITIES

\_\_\_\_\_ Lineal Feet (12'-0" Lengths)

\_\_\_\_\_ Right Endcaps

\_\_\_\_\_ Left Endcaps

\_\_\_\_\_ Finish Strip (Style 1) Lineal Feet

\_\_\_\_\_ Finish Strip (Style 2) Lineal Feet

\_\_\_\_\_ Closure Strip Lineal Feet

## APPROVALS



**ANSI/SPRI/FM 4435/ES-1**  
Test Pressures listed in notes



## PROJECT INFO

Project Name: \_\_\_\_\_

Architect: \_\_\_\_\_

Roofing Contractor: \_\_\_\_\_

### Project Type:

By selecting this box you have verified and confirmed that dimensions, sizes, and quantities are correct. All products will be installed in strict accordance with printed instructions.

Date: \_\_\_\_\_

**Hickman Edge Systems**

4 Commerce Way  
Arden, NC 28704  
Phone: 828-676-1700  
www.hickmanedgesystems.com

SHT# 1 of 1

DATE: **11/15/22**

DRN BY: **PL**

CKD BY: **MM**

DWG #: 64018-36642

REV: **B**