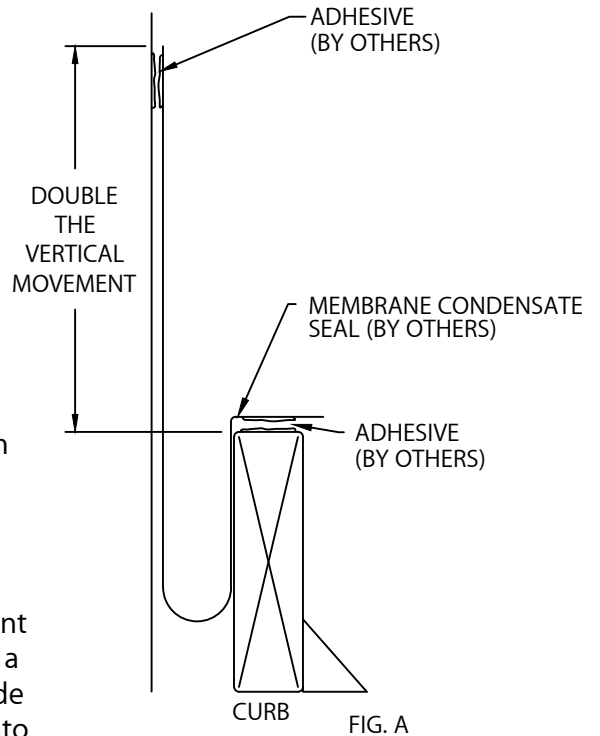
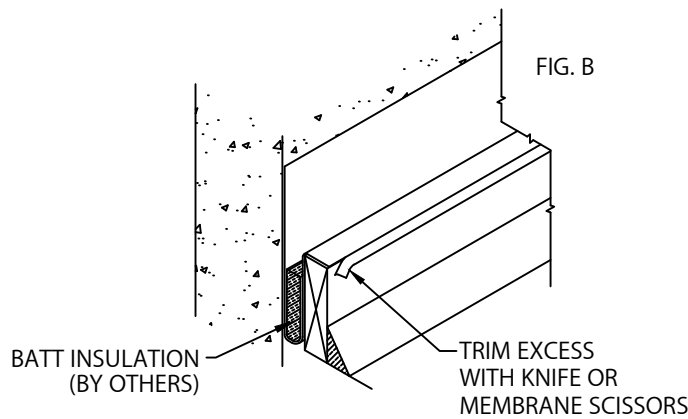


PERMASPAN RW 3-AXIS EXPANSION JOINT

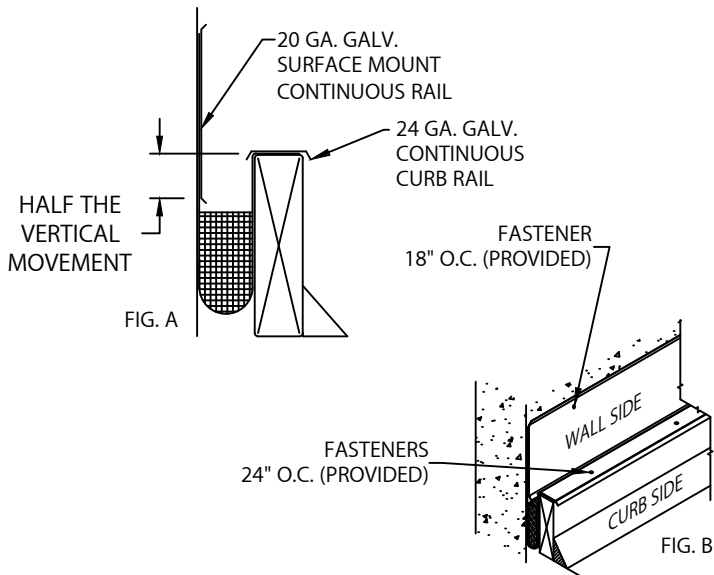
ROOF TO WALL VERSION WITH 3-AXIS MOVEMENT

INSTALLATION INSTRUCTIONS



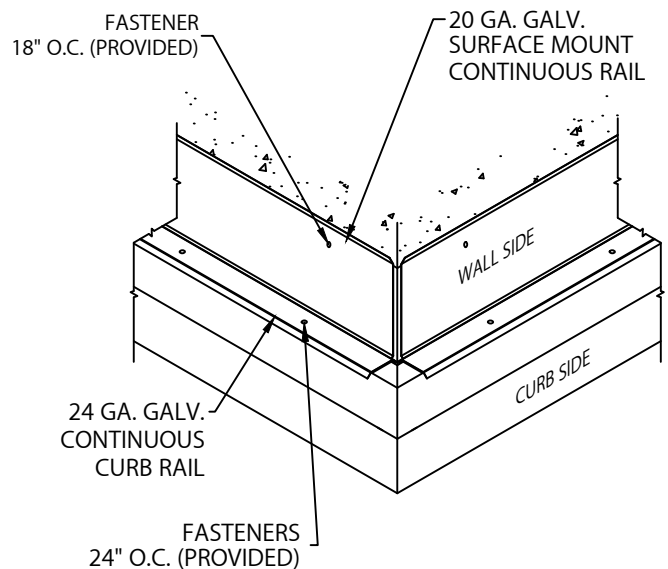
1. Condensation Seal

Begin the expansion joint installation by first inserting the condensation seal (by others) into the expansion joint gap between the curb and the wall, extending the pocket to a depth at least equal to the width of the expansion joint, more if allowable. Lap 6" and seal all membrane joints. Fold in the ends of the membrane seal, secure to the wood curb to a height on the wall of double the noted vertical movement, from the print approval, above curb to temporarily hold the membrane in place using an adhesive (by others) (Fig. A). Trim membrane to be even with the outside edge of the curb, if necessary (Fig. B). Insert the insulation (by others) into the pocket of the membrane.



2. Continuous Rails

Fasten the 24 ga. galvanized continuous curb rail 24" O.C. to the top of the wood curb with provided fasteners (Fig. B). Fasten the 20 ga. galvanized surface mount continuous rail (edges facing out) to the wall with provided fasteners 18" O.C.. The bottom edge of the surface mount rail must be half the noted vertical movement, from the print approval, below the top of the wood curb (Fig. A)



3. Mitters

Field cut curbs at a 90° angle as shown. Follow steps 1 and 2, installing condensation seal, insulation and continuous rails.

PERMASPAN RW 3-AXIS EXPANSION JOINT

ROOF TO WALL VERSION WITH 3-AXIS MOVEMENT

INSTALLATION INSTRUCTIONS

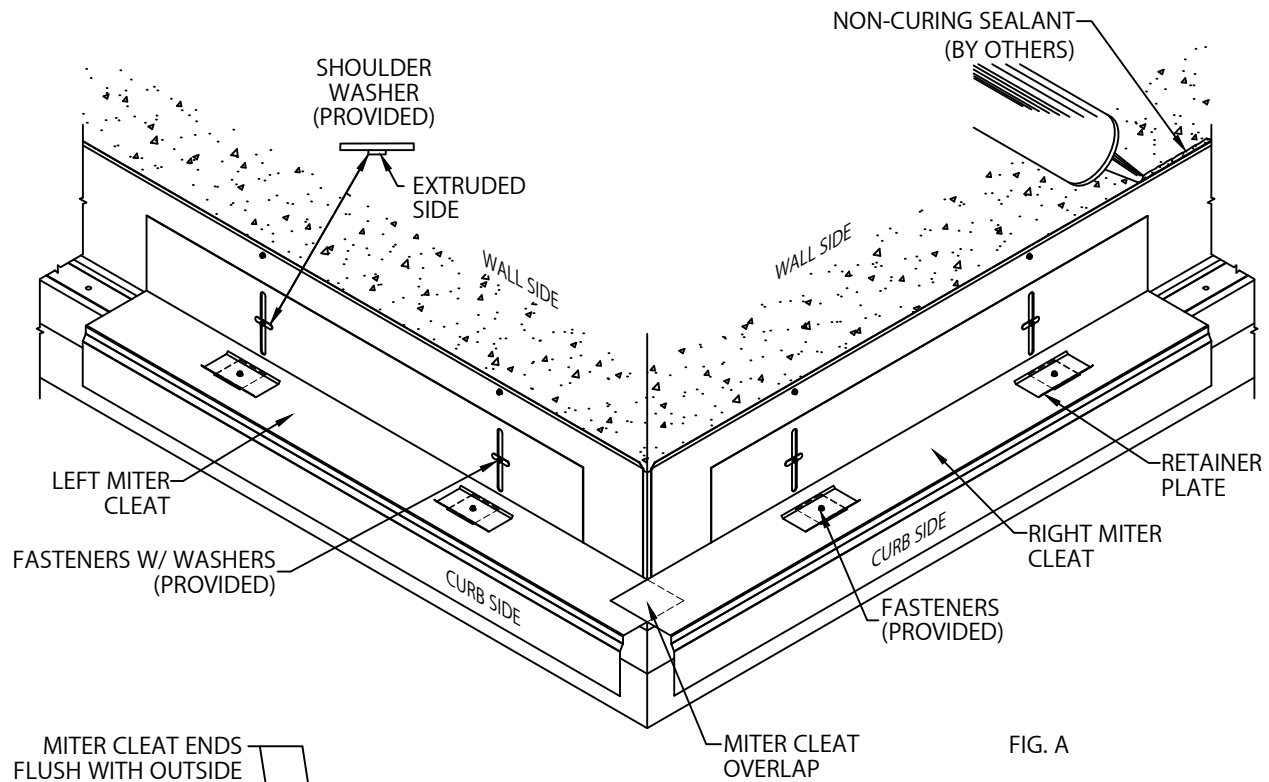


FIG. A

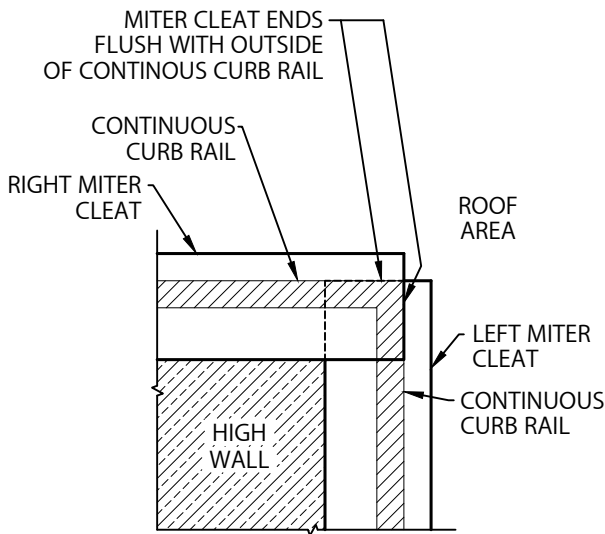


FIG. B

4. Outside Miters

Loosely lay miter cleat in place over the expansion joint curb. Position the cleat so that the vertical flange is against the wall. The cleat should extend beyond the curb (Fig. A). Cleats should be flush with outside of continuous curb rail (Fig. B) with one cleat overlapping the other at corner (Fig. A). Secure the cleat with fasteners and retainer plates provided, centered through the square holes of continuous cleat into the wood curb and fasteners with washers through slots into wall. The washers are to be placed extruded side down approximately slot center on the wall. Apply non-curing sealant (by others) to the top lip of surface mount continuous rail.

DO NOT OVERDRIVE THE SCREWS INTO THE CLEAT SO THAT THE SCREWS DO NOT RESTRICT MOVEMENT.

PERMASPAN RW 3-AXIS EXPANSION JOINT

ROOF TO WALL VERSION WITH 3-AXIS MOVEMENT

INSTALLATION INSTRUCTIONS

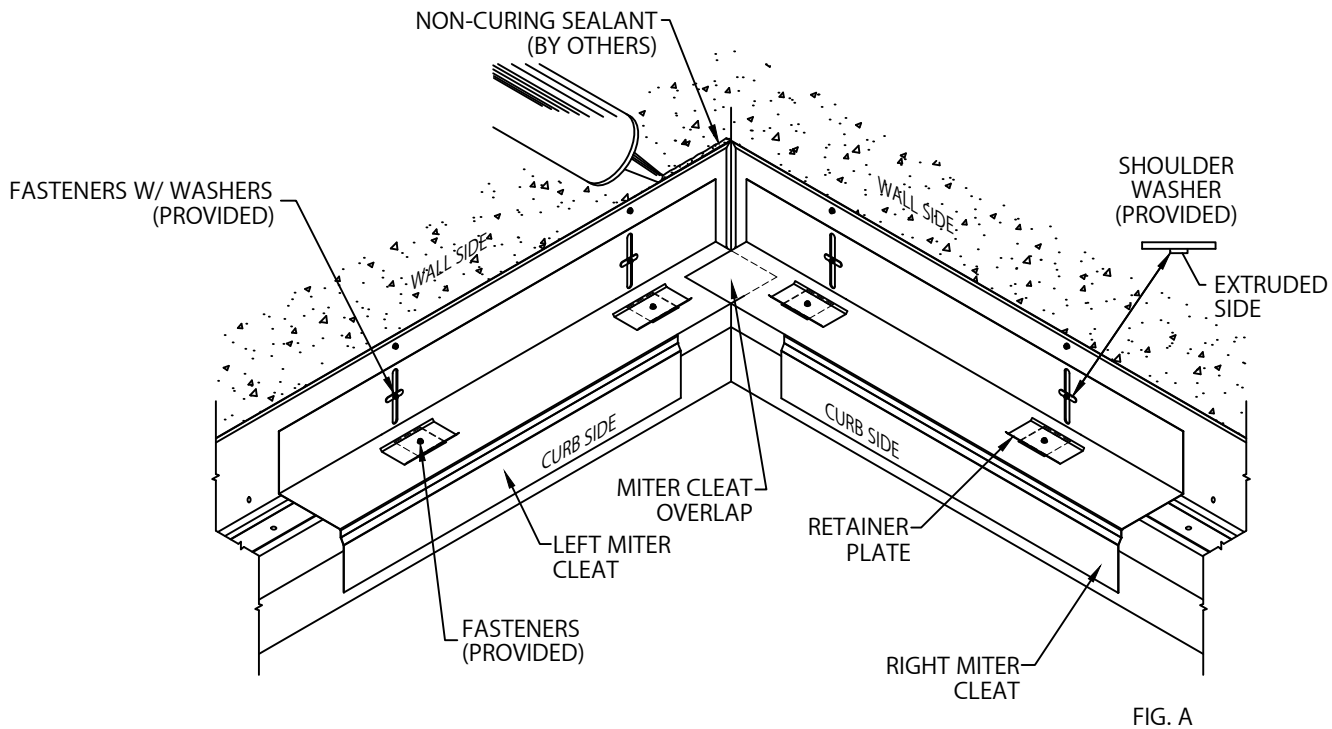


FIG. A

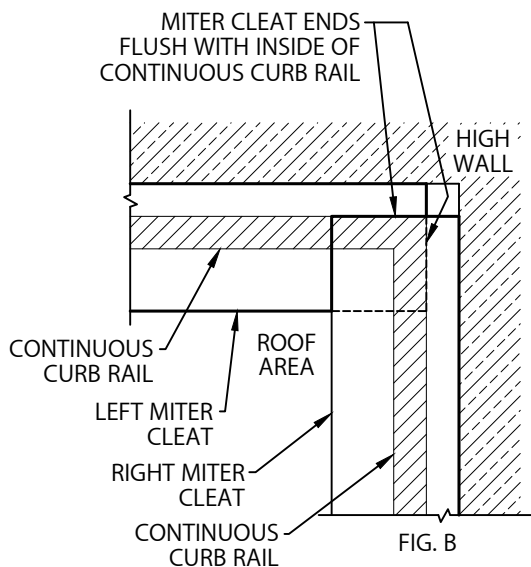


FIG. B

5. Inside Miters

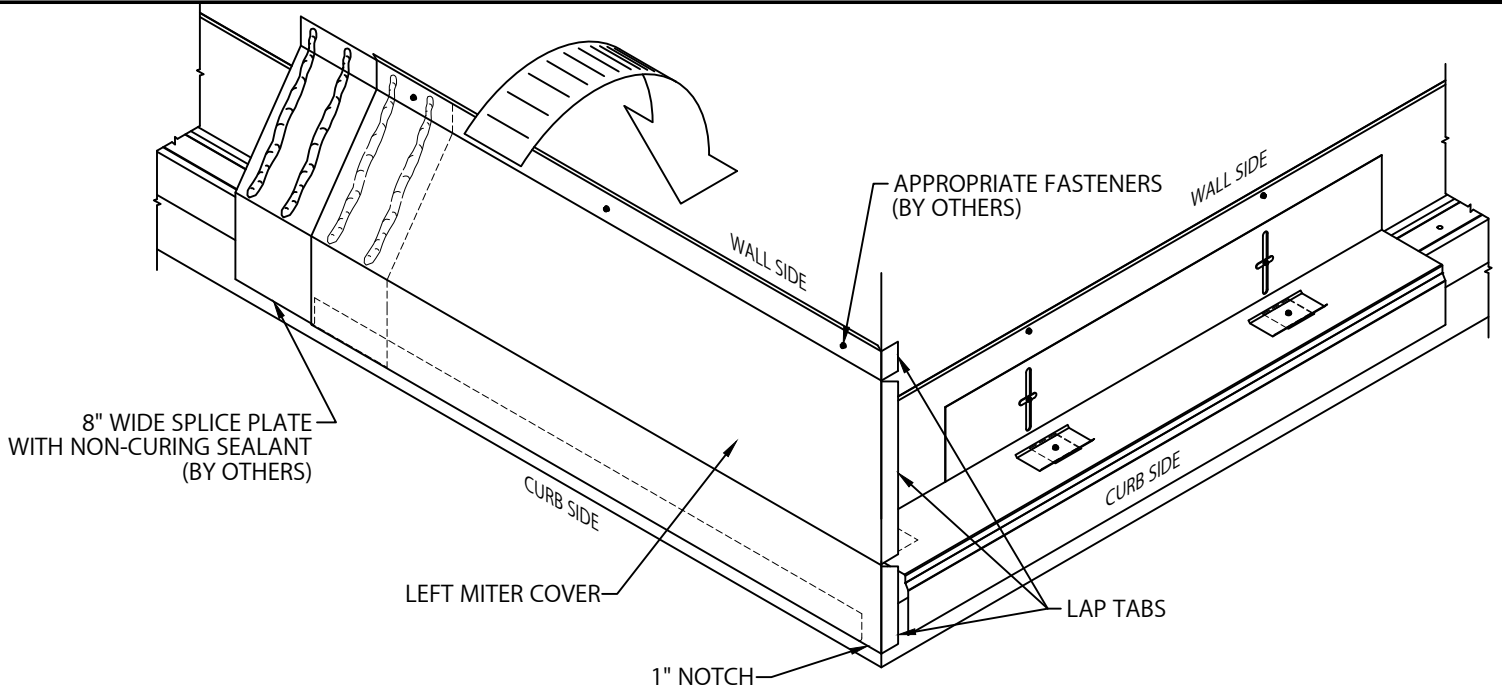
Loosely lay miter cleat in place over the expansion joint curb. Position the cleat so that the vertical flange is against the wall. The cleat should extend beyond the curb (Fig. A). Cleats should be flush with inside of curb rail (Fig. B) with one cleat overlapping the other at corner (Fig. A). Secure the cleat fasteners and retainer plates provided, centered through the square holes of continuous cleat into the wood curb and fasteners with washers through slots into wall. The washers are to be placed extruded side down approximately slot center on the wall. Apply non-curing sealant (by others) to the top lip of surface mount continuous rail.

DO NOT OVERDRIVE THE SCREWS INTO THE CLEAT SO THAT THE SCREWS DO NOT RESTRICT MOVEMENT.

PERMASPAN RW 3-AXIS EXPANSION JOINT

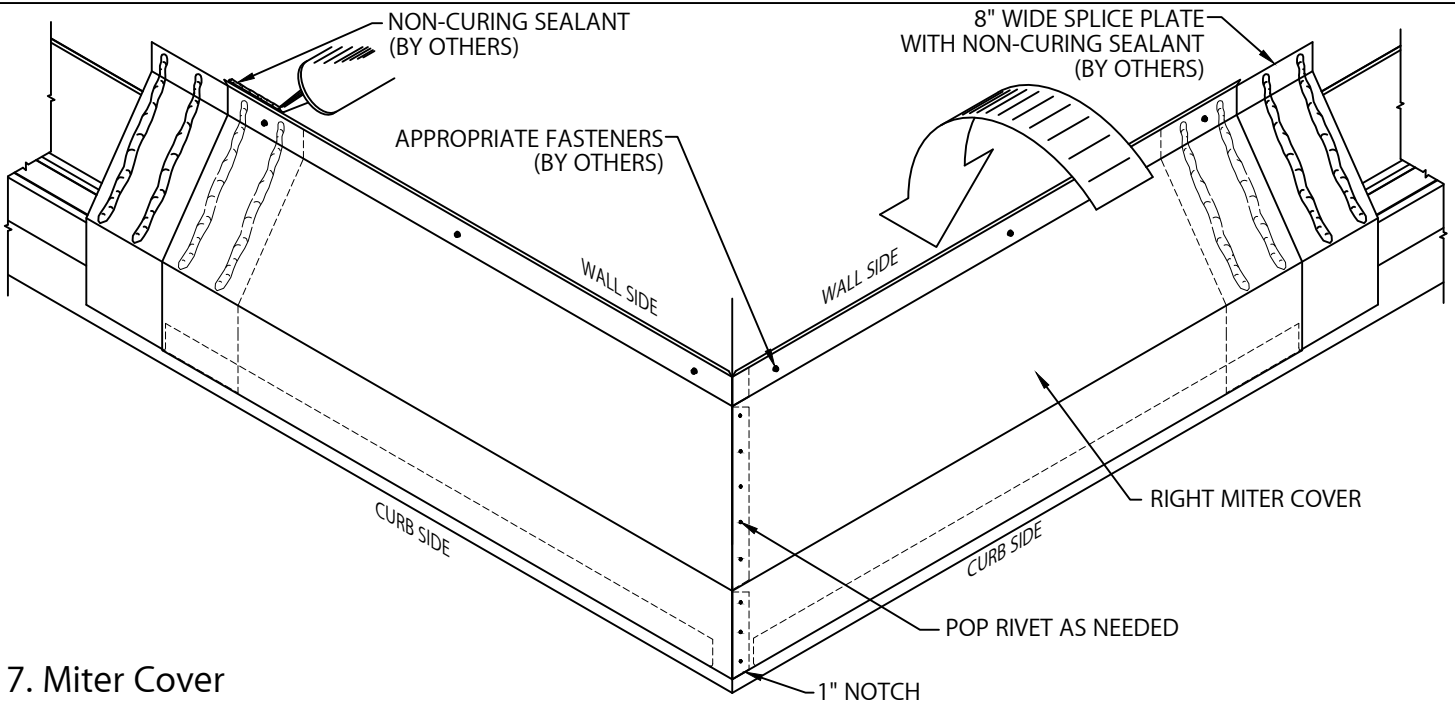
ROOF TO WALL VERSION WITH 3-AXIS MOVEMENT

INSTALLATION INSTRUCTIONS



6. Miter Cover

Locate splice plate, apply non-curing sealant (by others) as shown and place into end of miter cover. Hook left miter cover section on the curb side of the miter cleat and rotate until cover rests on the wall. Fasten the cover to the wall 12" O.C. through pre-slotted holes using appropriate fasteners (not provided).



7. Miter Cover

Locate splice plate, apply non-curing sealant (by others) as shown and place into end of miter cover. Hook right miter cover section on the curb side of the miter cleat and rotate over lap tabs until cover rests on the wall. Fasten the cover to the wall 12" O.C. through pre-slotted holes using appropriate fasteners (not provided). Apply non-curing sealant (by others) to miter cover as shown. Pop rivet lap as needed.

NOTE: Remove protective film immediately.

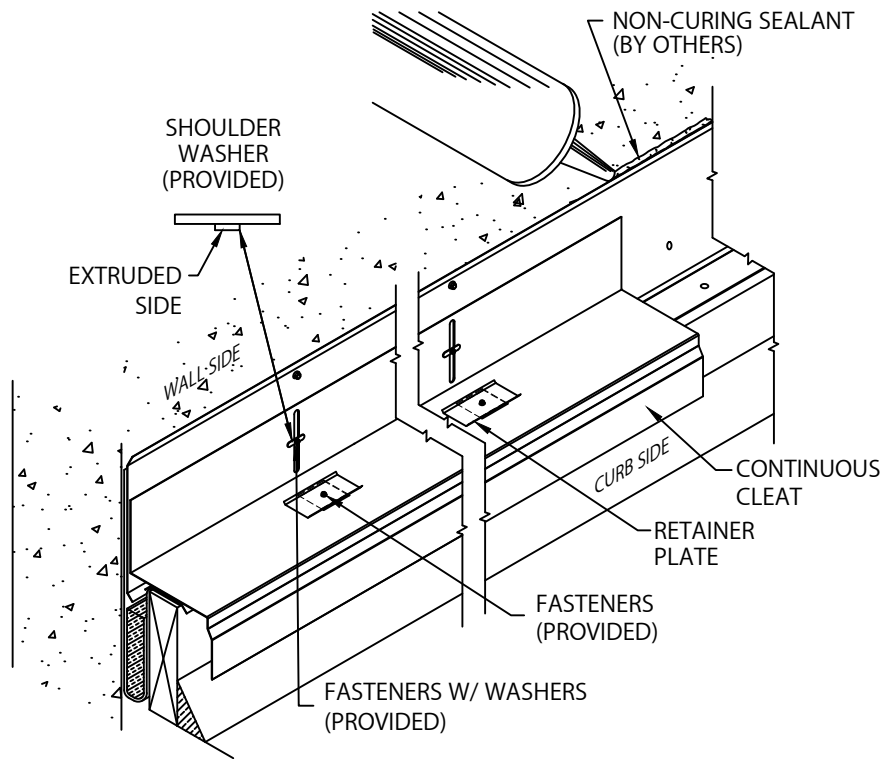
PERMASPAN RW 3-AXIS EXPANSION JOINT

ROOF TO WALL VERSION WITH 3-AXIS MOVEMENT

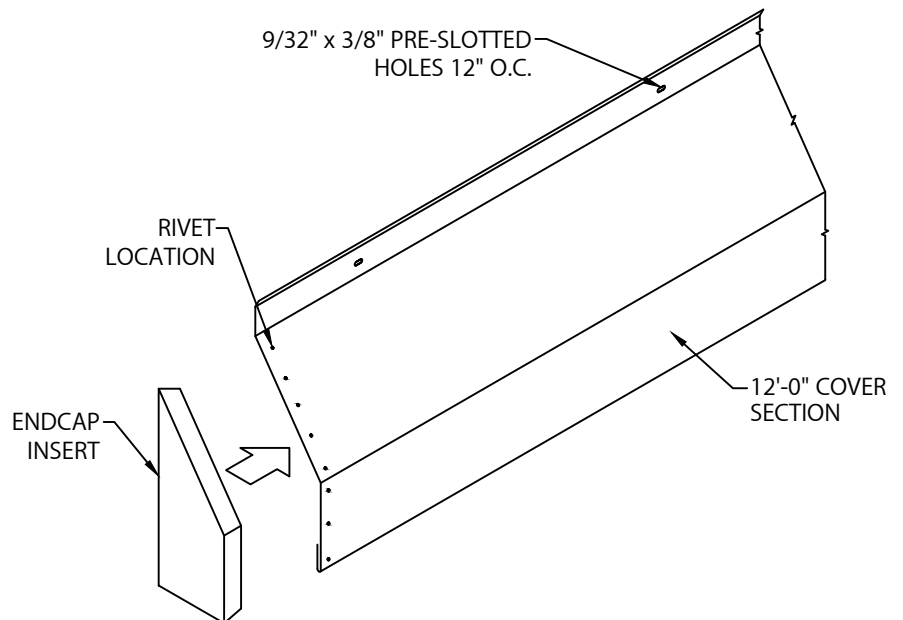
INSTALLATION INSTRUCTIONS

8. Endcaps

Follow steps 1 and 2 installing condensate seal and rails. Loosely lay continuous cleat in place over the expansion joint curb. Position the cleat so that the vertical flange is against wall. The cleat should extend beyond the curb. Secure the cleat with fasteners and retainer plates provided, through the square holes of continuous cleat into the wood curb and fasteners with washers through slots into wall. The washers are to be placed extruded side down approximately slot center on the wall. Apply non-curing sealant (by others) to the top lip of surface mount continuous rail.



DO NOT OVERDRIVE THE SCREWS INTO THE CLEAT SO THAT THE SCREWS DO NOT RESTRICT MOVEMENT.



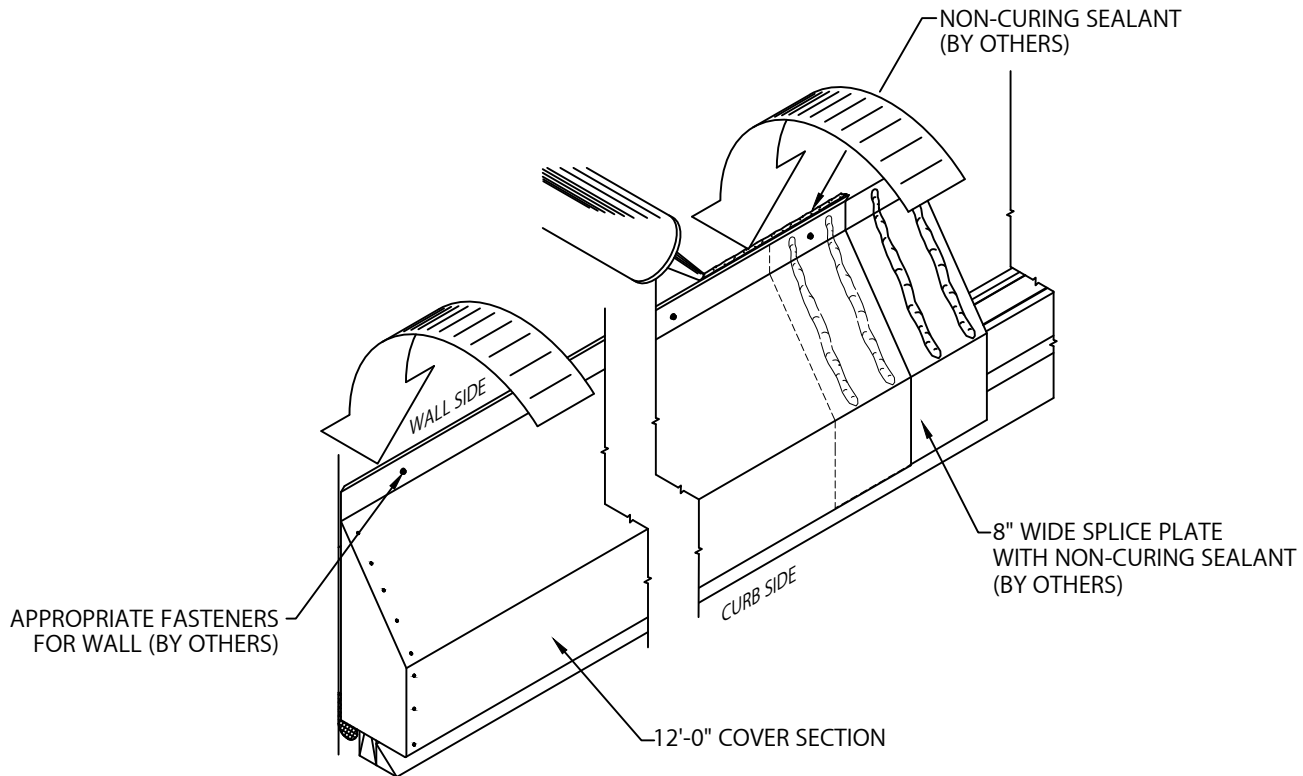
9. Endcap Inserts

Place endcap insert into 12'-0" cover section. Pop rivet (not provided) insert into place and seal tite using non-curing sealant on inside cover along seams.

PERMASPAN RW 3-AXIS EXPANSION JOINT

ROOF TO WALL VERSION WITH 3-AXIS MOVEMENT

INSTALLATION INSTRUCTIONS



10. Endcaps

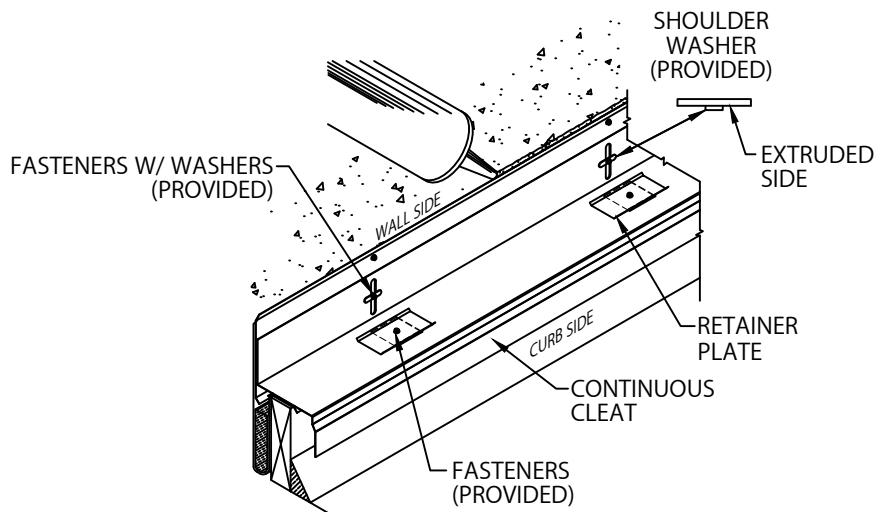
Locate splice plate, apply non-curing sealant as shown and place into 12'-0" cover section. Hook cover section on the curb side of the continuous cleat and rotate until the cover rests on the wall (Fig. B). Fasten to wall through pre-slotted holes 12" O.C. using appropriate fasteners (by others) for substrate. Apply non-curing sealant (by others) to cover as shown (Fig. C).

NOTE: Remove protective film immediately.

PERMASPAN RW 3-AXIS EXPANSION JOINT

ROOF TO WALL VERSION WITH 3-AXIS MOVEMENT

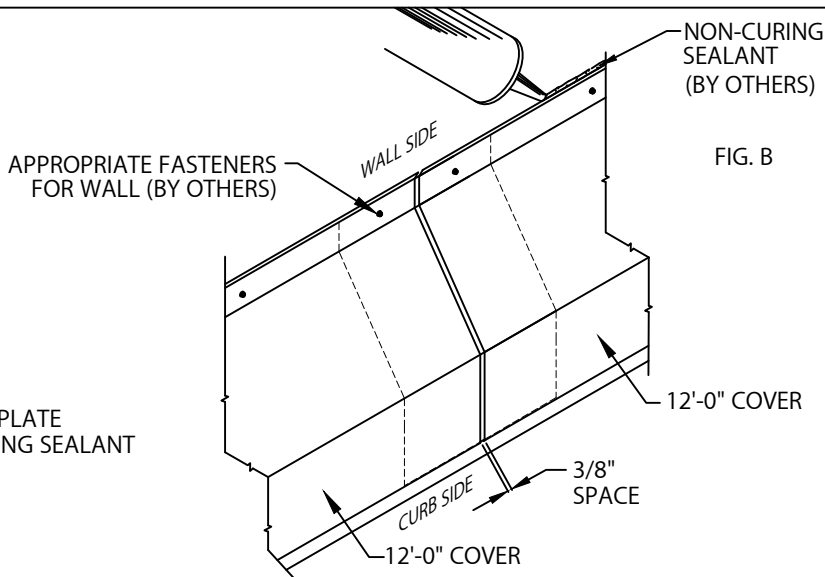
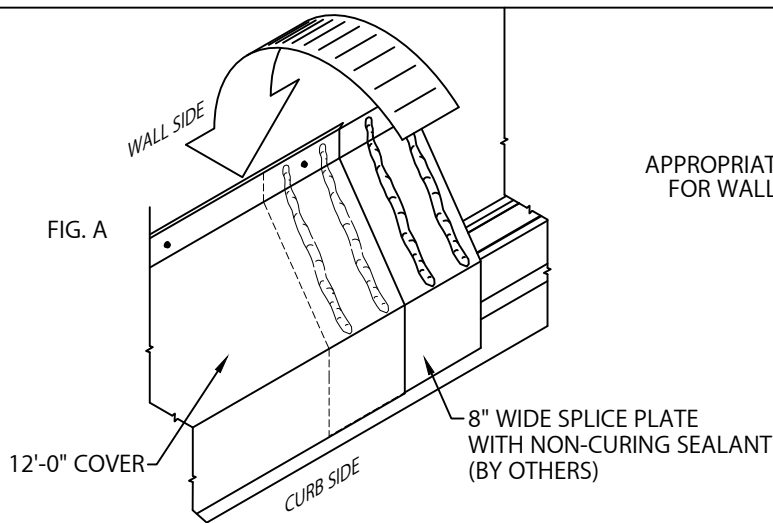
INSTALLATION INSTRUCTIONS



11. Continuous Cleat

Follow steps 1 and 2 installing condensate seal and rails. Starting at the ends, loosely lay continuous cleat in place over the expansion joint curb. Cut cover lengths as needed to cover entire run on the expansion joint. Position the cleat so that the vertical flange is against the wall. The cleat should extend beyond the curb. Secure the cleat with fasteners and retainer plates provided, through the square holes of continuous cleat into the wood curb and fasteners with washers through slots into wall. The washers are to be placed extruded side down approximately slot center on the wall. Apply non-curing sealant (by others) to the top lip of surface mount continuous rail.

DO NOT OVERDRIVE THE SCREWS INTO THE CLEAT SO THAT THE SCREWS DO NOT RESTRICT MOVEMENT.



12. Expansion Joint Cover

Locate splice plate, apply non-curing sealant (by others) as shown and place into 12'-0" cover section. Hook cover section on the curb side of the continuous cleat and rotate until the cover rests on the wall (Fig. A). Fasten to wall through pre-slotted holes 12" O.C. using appropriate fasteners (by others) for substrate and apply non-curing sealant to cover as shown (Fig. B). Continue installing cover with 3/8" space at splice joints to allow for thermal expansion (Fig. B). Field cut where necessary using a fine tooth hacksaw or snips.

NOTE: Remove protective film immediately.

PERMASPAN RW 3-AXIS EXPANSION JOINT

ROOF TO WALL VERSION WITH 3-AXIS MOVEMENT

INSTALLATION INSTRUCTIONS

TYPICAL INSTALLATION

