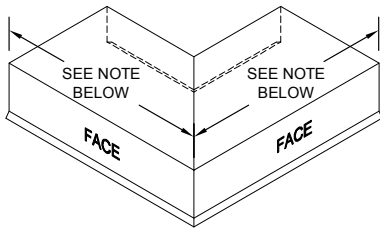
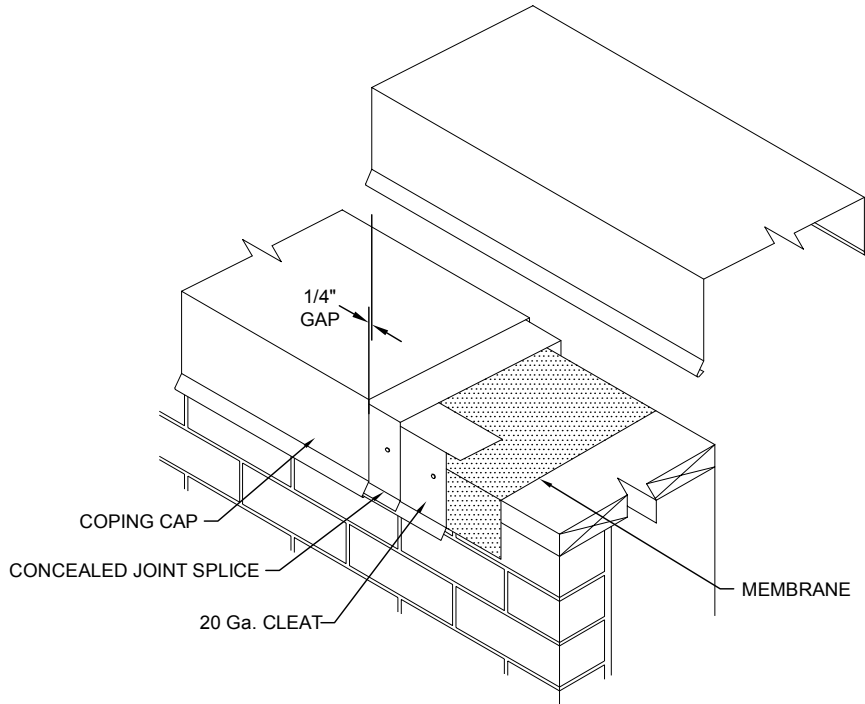
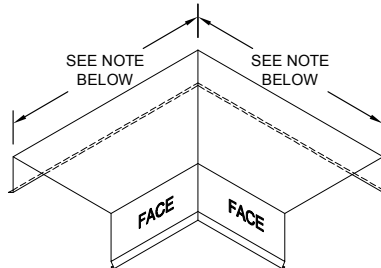


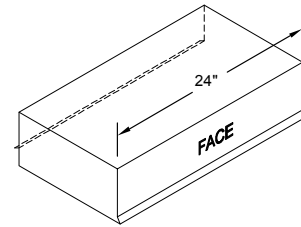
SecurEdge 300 Continuous Cleat Coping



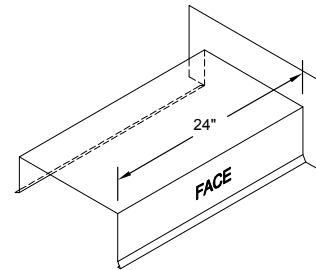
OUTSIDE MITER



INSIDE MITER



END CAP
LEFT HAND SHOWN



END TERM
RIGHT HAND SHOWN

Standard coping miter leg lengths:
 23-1/4" for 6-in to 16-in wall widths
 29-3/4-in 16" to 23-in wall widths
 custom lengths for wall widths > 23"
 Standard coping miter angle is 90°
 For special miter requirements, attach sketches or consult manufacturer for assistance.