

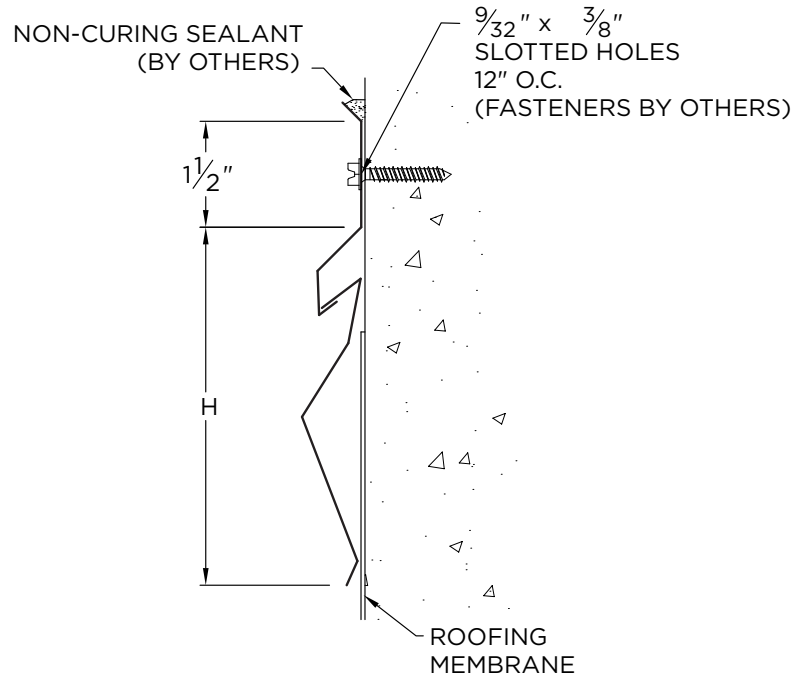


## 2-PIECE COUNTERFLASHING

### SURFACE MOUNTED

### NOTES

- Pre-Notched Lap Joints
- No Fasteners Provided



### DIMENSIONS

#### Surface Mounted (H DIM)

3.5" (CFW2-350R)

4" (CFW2-400R)

5" (CFW2-500R)

### MATERIAL

☐ 24 Ga. Galv. Steel

☐ 22 Ga. Galv. Steel

☐ .040" Aluminum

☐ .050" Aluminum

☐ OTHER: \_\_\_\_\_

Color: \_\_\_\_\_

Finish: \_\_\_\_\_

### PROJECT INFO

Project Name: \_\_\_\_\_

Architect: \_\_\_\_\_

Roofing Contractor: \_\_\_\_\_

#### Project Type:



By selecting this box you have verified and confirmed that dimensions, sizes, and quantities are correct. All products will be installed in strict accordance with printed instructions.

Date: \_\_\_\_\_

**Versico**  
Customer Service  
800-558-2162  
(Metal-Era)

SHT# 1 of 1

DATE: 02/01/ 22

DRN BY: JJC

CKD BY: MM

DWG #: 18015-24499

REV: B

### QUANTITIES

\_\_\_\_\_ Lineal Feet (12'-0" Lengths)