



SECUREDGE EXTENDER-A FOR NON-STANDARD HEIGHT

NOTES

- Unless otherwise noted, fabrication of miters and accessories are furnished standard utilizing a non-penetrating quicklock joint, then factory sealed watertight.
- Welded accessories require a minimum material thickness of .050"
- For non-90 miters, see separate print approval
- Product should be installed per provided installation instructions
- ANSI/SPRI/FM 4435/ES-1 Test Pressure up to 107 psf

APPROVALS



ANSI/SPRI/FM 4435/ES-1
Test Pressures listed in notes

PROJECT INFO

Project Name: _____

Architect: _____

Roofing Contractor: _____

Project Type: _____

☐ By selecting this box you have verified and confirmed that dimensions, sizes, and quantities are correct. All products will be installed in strict accordance with printed instructions.

Date: _____

Carlisle SynTec Systems
Customer Service
866-458-3537
(Metal-Era)

SHT #: 1 OF 2

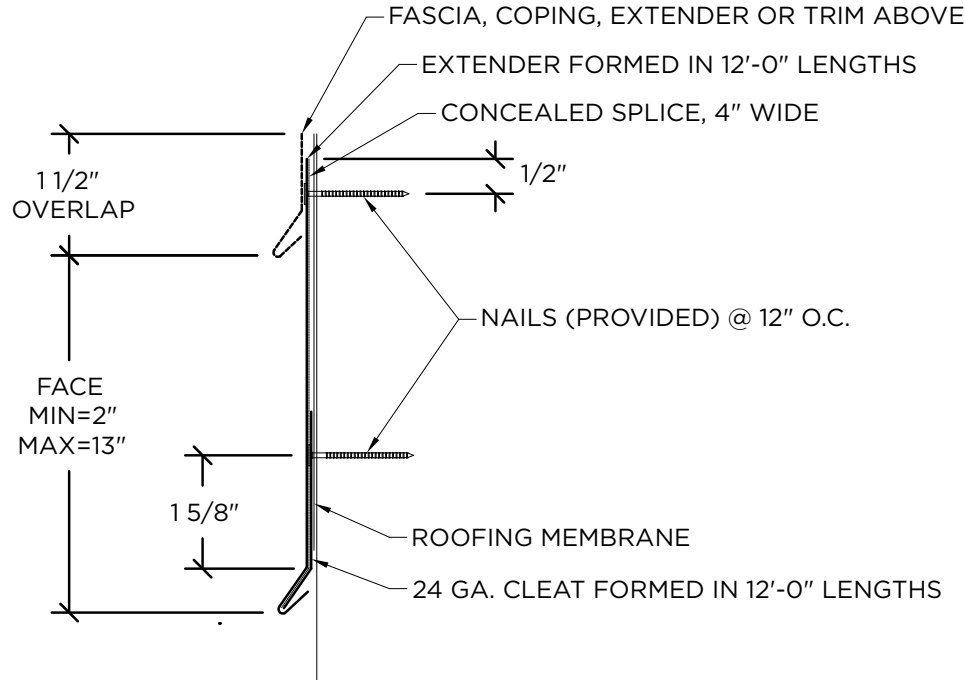
DATE: 09/21/ 22

DRN BY: PL

CKD BY: MM

DWG #: 15014-1706

REV: C



DIMENSIONS

Please Fill Out Dimensions On Drawing

MATERIAL

- ☐ 24 Ga. Galv. Steel
☐ 22 Ga. Galv. Steel
☐ .040" Aluminum
☐ .050" Aluminum
☐ .063" Aluminum
☐ OTHER: _____

Color: _____

Finish: _____

Substrate: ☐ Wood
If substrate is not given, wood fasteners will be provided. ☐ Masonry
☐ Metal

QUANTITIES

_____ Lineal Feet (12'-0" Lengths)

_____ Outside Miter (90°)

_____ Inside Miter (90°)

_____ Right Endcaps

_____ Left Endcaps

_____ Right Endwall Flashing

_____ Left Endwall Flashing

Accessory Type:

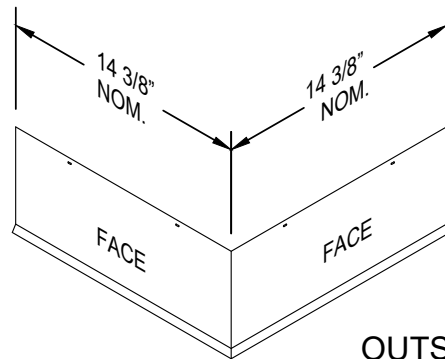
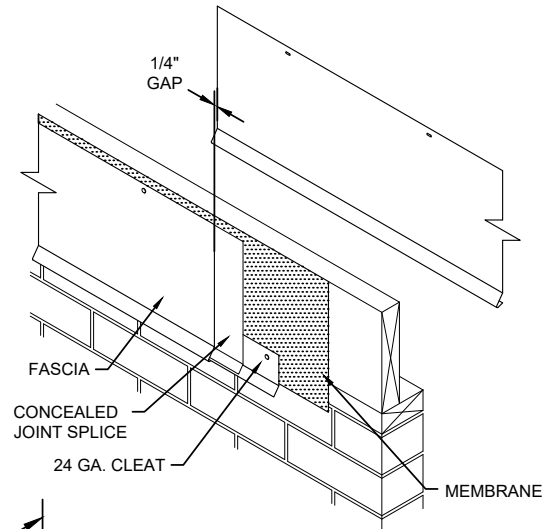
- ☐ Quicklock (Default)
☐ Welded (Surcharge)

SECUREDGE EXTENDER-A

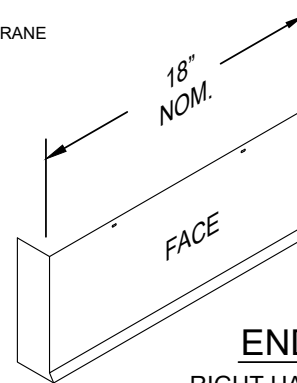
STANDARD ACCESSORIES

NOTES

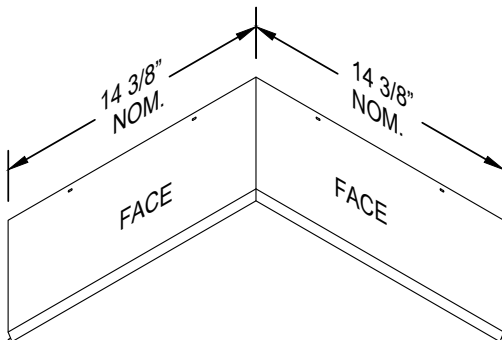
- Standard miter angle is 90 degrees
- For special miter requirements, attach sketches or consult manufacturer for assistance.



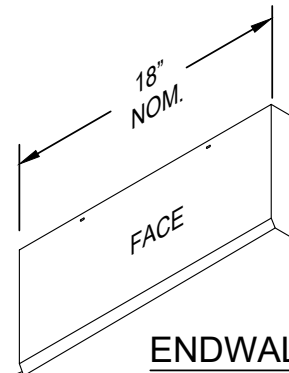
OUTSIDE MITER



ENDCAP
RIGHT HAND SHOWN



INSIDE MITER



ENDWALL FLASHING
LEFT HAND SHOWN

SHT# 2 of 2

DATE: 09/21/ 22

DRN BY: PL

CKD BY: MM

DWG #: 15014-1706

REV: C

Carlisle SynTec Systems
Customer Service
866-458-3537
(Metal-Era)