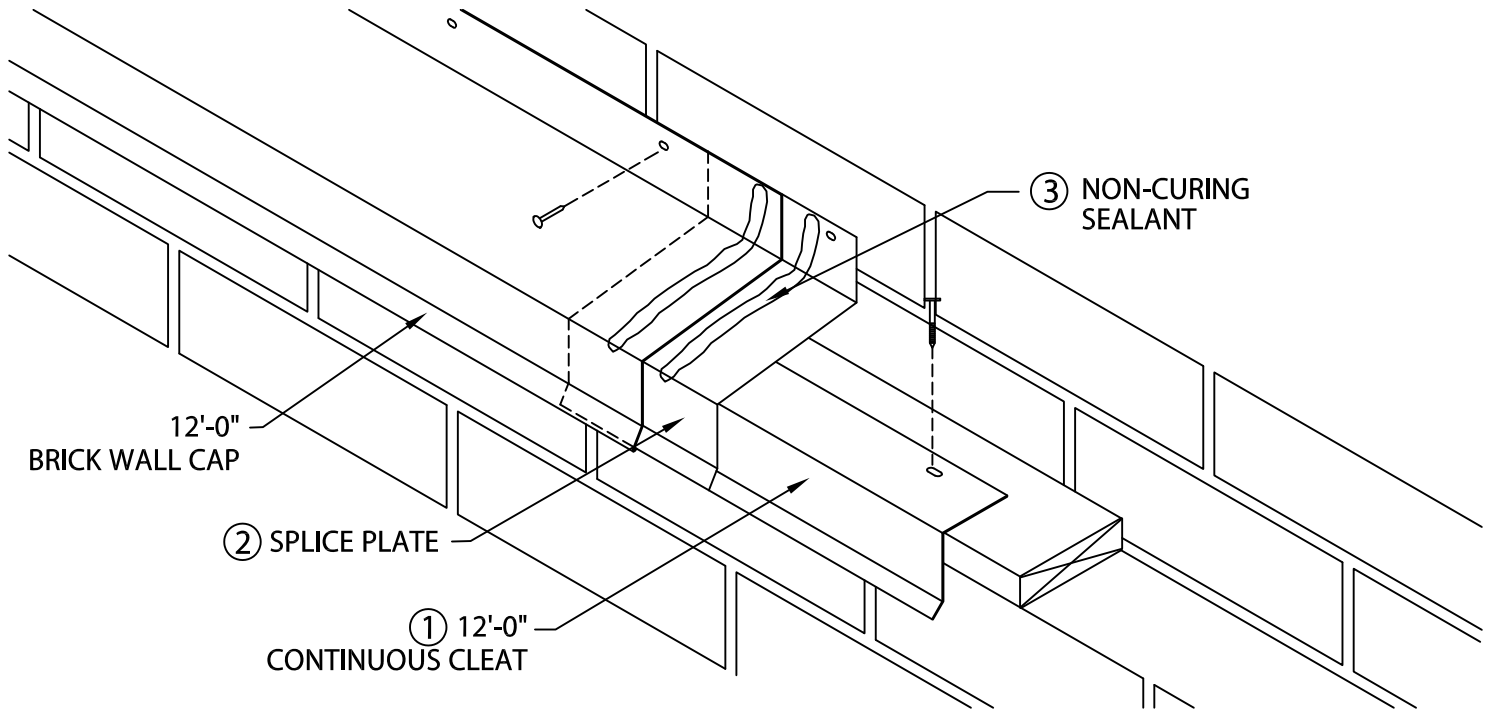


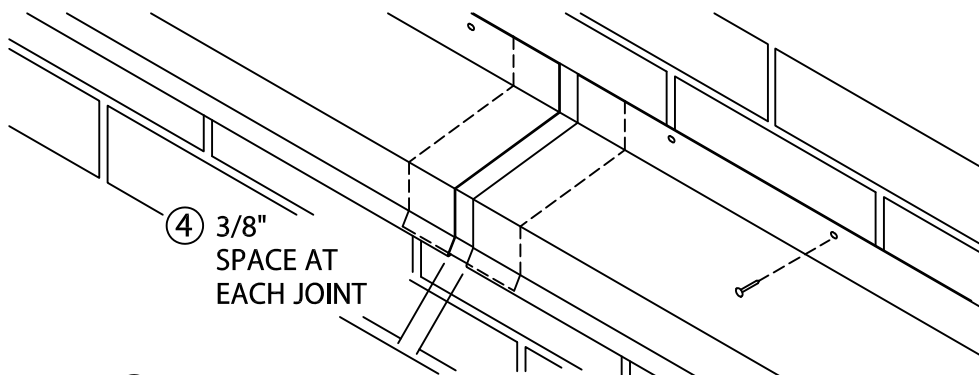
NOTE : INSTALL MITERS FIRST



STEP ① - POSITION AND FASTEN CONTINUOUS CLEAT 12" O.C. AS SHOWN WITH APPROPRIATE FASTENERS.

STEP ② - LOCATE AND FASTEN 8" WIDE SPLICE PLATES AT EACH JOINT.

STEP ③ - APPLY BEADS OF NON-CURING SEALANT (BY OTHERS) TO SPLICE PLATES AS SHOWN.



STEP ④ - HOOK DRIP EDGE OF EACH BRICK/WALL CAP ONTO CONTINUOUS CLEAT, ROTATE INTO PLACE, AND FASTEN WITH APPROPRIATE FASTENERS. CONTINUE BY INSTALLING BRICK/WALL CAP SECTIONS AND SPLICE PLATES, ALLOWING A 3/8" SPACE AS SHOWN. FIELD CUT AS NECESSARY.

CAUTION: REMOVE PROTECTIVE FILM IMMEDIATELY AFTER INSTALLATION. INSTALLERS SHALL WEAR PROTECTIVE EYEWEAR TO PREVENT INJURY.

TYPICAL INSTALLATION

