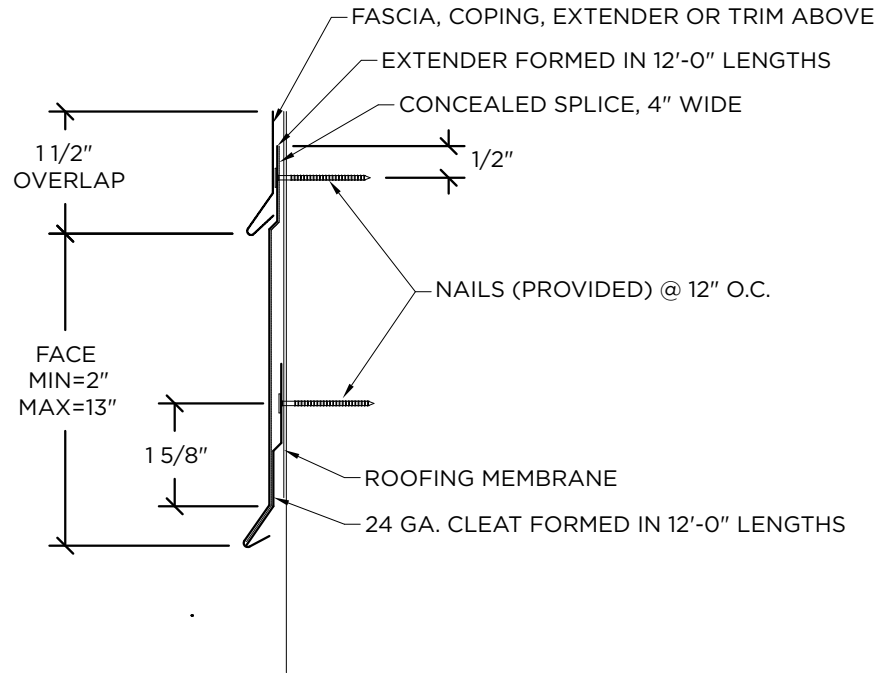




# SECUREDGE EXTENDER-B FOR NON-STANDARD HEIGHT

## NOTES

- Unless otherwise noted, fabrication of miters and accessories are furnished standard utilizing a non-penetrating quicklock joint, then factory sealed watertight.
- Welded accessories require a minimum material thickness of .050"
- For non-90 miters, see separate print approval
- Product should be installed per provided installation instructions
- ANSI/SPRI/FM 4435/ES-1 Test Pressure up to 107 psf



MEASUREMENT

## APPROVALS



**ANSI/SPRI/FM 4435/ES-1**  
Test Pressures listed in notes

## PROJECT INFO

Project Name: \_\_\_\_\_

Architect: \_\_\_\_\_

Roofing Contractor: \_\_\_\_\_

### Project Type:

By selecting this box you have verified and confirmed that dimensions, sizes, and quantities are correct. All products will be installed in strict accordance with printed instructions.

Date: \_\_\_\_\_

**Carlisle SynTec Systems**  
Customer Service  
866-458-3537  
(Metal-Era)

SHT #: 1 OF 2

DATE: 09/21/ 22

DRN BY: PL

CKD BY: MM

DWG #: 15014-1663

REV: D

## DIMENSIONS

Please Fill Out Dimensions On Drawing

## MATERIAL

- 24 Ga. Galv. Steel
- 22 Ga. Galv. Steel
- .040" Aluminum
- .050" Aluminum
- .063" Aluminum
- OTHER: \_\_\_\_\_

Color: \_\_\_\_\_

Finish: \_\_\_\_\_

**Substrate:**  Wood

If substrate is not given, wood fasteners will be provided.  Masonry

Metal

## QUANTITIES

\_\_\_\_\_ Lineal Feet (12'-0" Lengths)

\_\_\_\_\_ Outside Miter (90°)

\_\_\_\_\_ Inside Miter (90°)

\_\_\_\_\_ Right Endcaps

\_\_\_\_\_ Left Endcaps

\_\_\_\_\_ Right Endwall Flashing

\_\_\_\_\_ Left Endwall Flashing

Accessory Type:

Quicklock (Default)

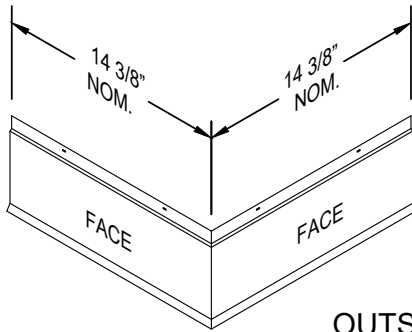
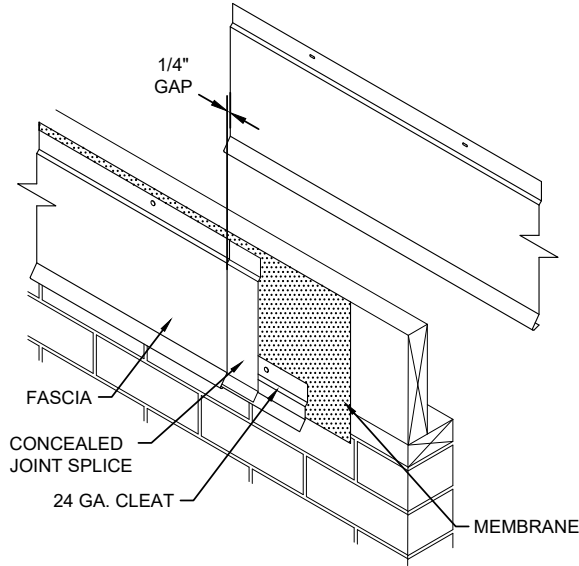
Welded (Surcharge)

# SECUREDGE EXTENDER-B

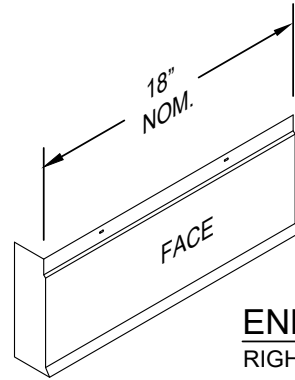
## STANDARD ACCESSORIES

### NOTES

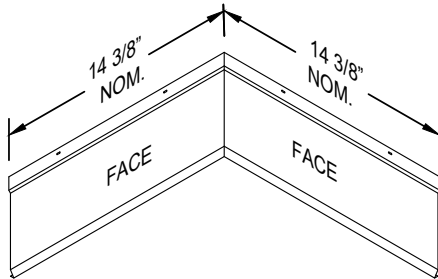
- Standard miter angle is 90 degrees
- For special miter requirements, attach sketches or consult manufacturer for assistance.



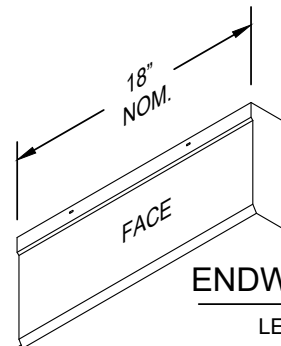
OUTSIDE MITER



ENDCAP  
RIGHT HAND SHOWN



INSIDE MITER



ENDWALL FLASHING  
LEFT HAND SHOWN

SHT# 2 of 2

DATE: 09/21/ 22

DRN BY: PL

CKD BY: MM

DWG #: 15014-1663

REV: D

**Carlisle SynTec Systems**  
Customer Service  
866-458-3537  
(Metal-Era)