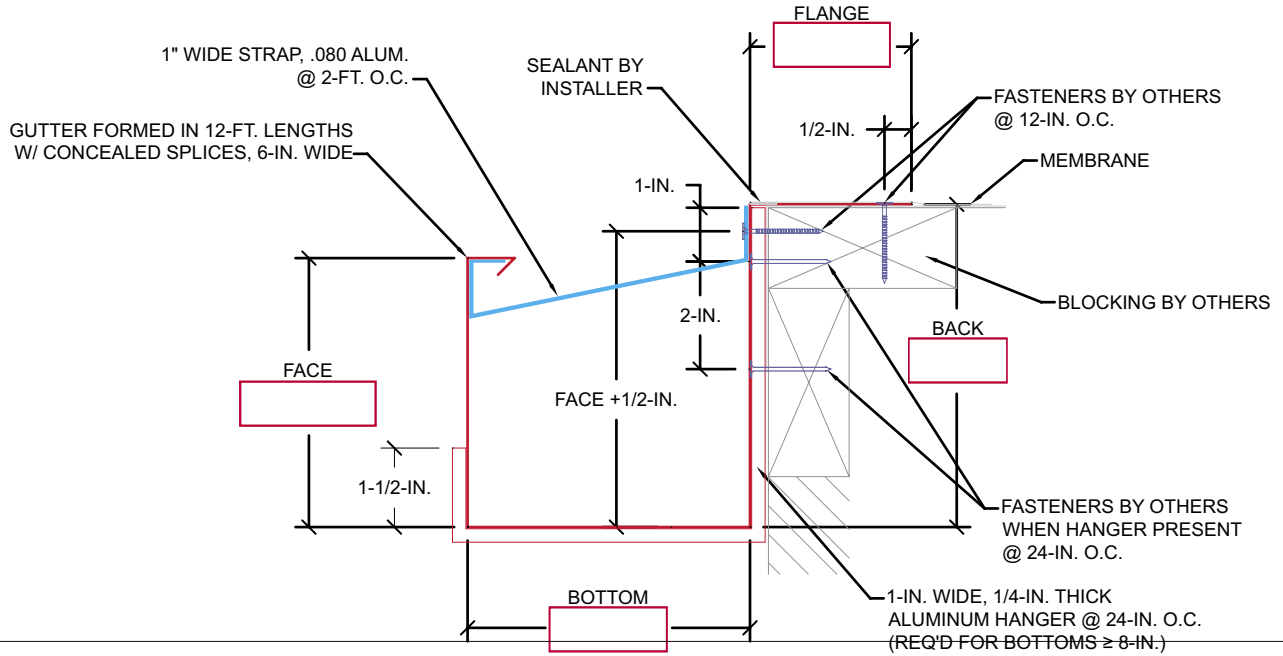


HICKMAN⁷

Box Gutter

ORDER SPECIFICATION FORM



PLEASE CONTACT US FOR MASONRY APPLICATIONS.

CONTACT US FOR APPROPRIATE RECOMMENDATIONS NEEDED TO MEET/EXCEED ANSI/SPRI/GT-1 DESIGN CRITERIA

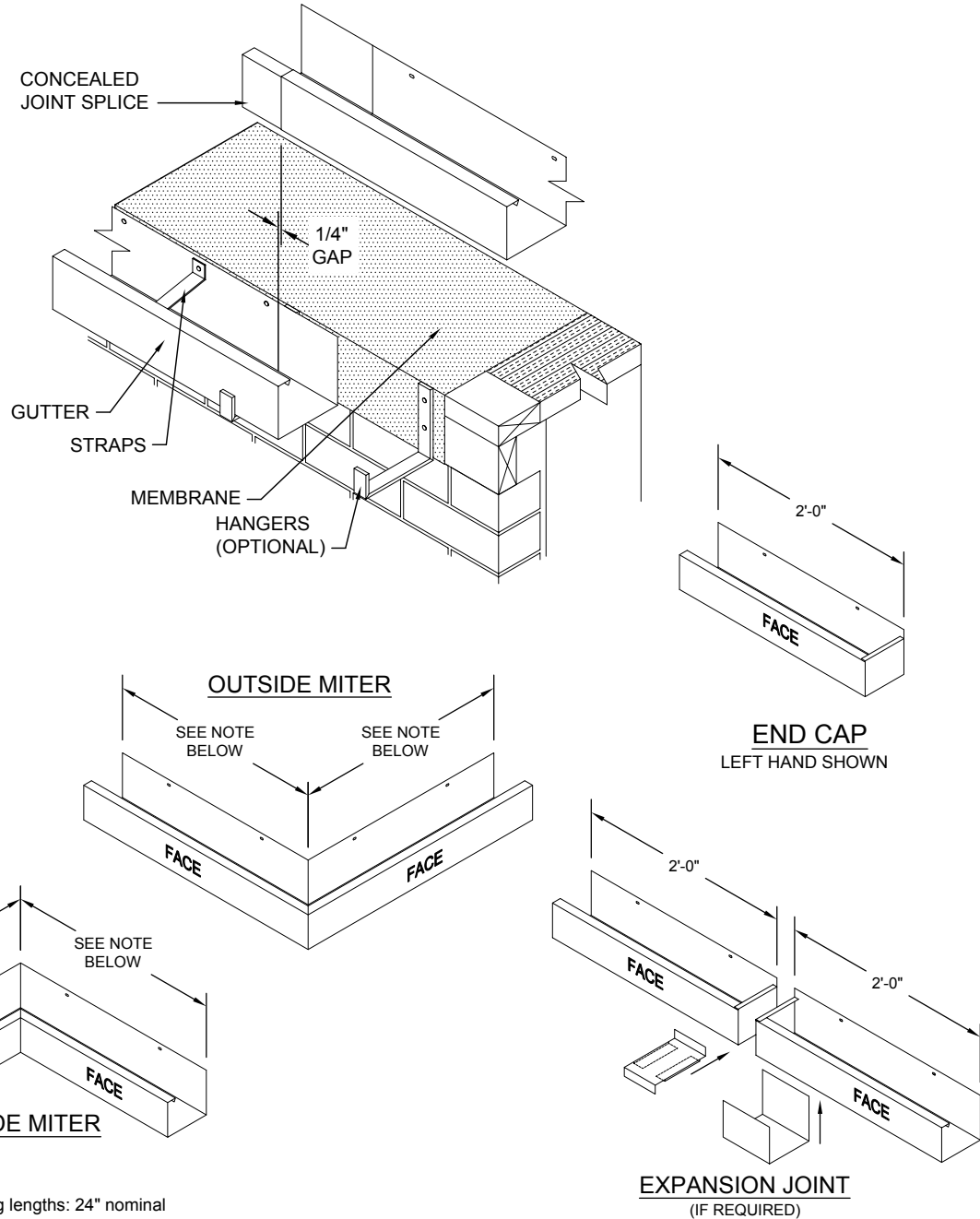
QUANTITY	CAP MATERIAL	THICKNESS	ACCESSORY TYPE	CAP FINISH
<input type="text"/> Total LF (12' pcs) <input type="text"/> Miters (<input type="text"/> Outside, <input type="text"/> Inside) <input type="text"/> End Caps (<input type="text"/> Left, <input type="text"/> Right) <input type="text"/> Expansion Joints (End Caps) <input type="text"/> End Cap Inserts (<input type="text"/> Left, <input type="text"/> Right) <input type="text"/> Expansion Joint Inserts <input type="text"/> Radius LF (5'-0" pcs) <input type="text"/> Radius to Straight Miter <input type="text"/> Radius End Caps	Aluminum Galvanized Stainless Steel	0.040 0.050 0.063 0.080 24 Ga. 22 Ga.	Welded Meta-Lok HANGERS Painted Mill None	Mill Finish Prefinished Kynar Premium Prefinished Kynar Post Finished Kynar Prefinished Anodized Post Finished Anodized
	COLOR			

APPROVALS: Contact manufacturer for verification of test report data on your project.	CUSTOMER APPROVAL Authorized Customer Signature	
	Approved for Fabrication Approved with Changes Not Approved	_____ Title Date
Job Name:	Job #:	By:
Customer:	Project Location:	Date:
Representative:	Architect:	Sheet of

HICKMAN

EDGE SYSTEMS

Box Gutter



Standard gutter miter leg lengths: 24" nominal
 Standard gutter miter angle is 90°
 For special miter requirements, attach sketches or consult manufacturer for assistance.

HICKMAN

EDGE SYSTEMS

4 Commerce Way | Arden, NC 28704
 (800) 892-9173 | (828) 676-1700 | HickmanEdgeSystems.com
 Copyright ©2021. All rights reserved.

Superior productivity.
 Superior performance.

