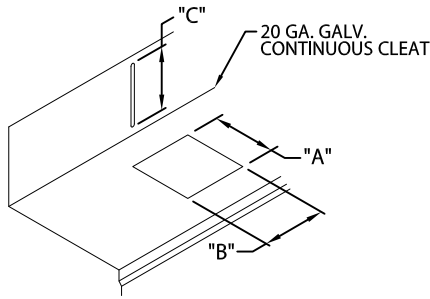


PERMASPAN RW 3-AXIS EXPANSION JOINT

ROOF TO WALL VERSION WITH 3 AXIS MOVEMENT



DETAIL VIEW OF 3 AXIS MOVEMENT

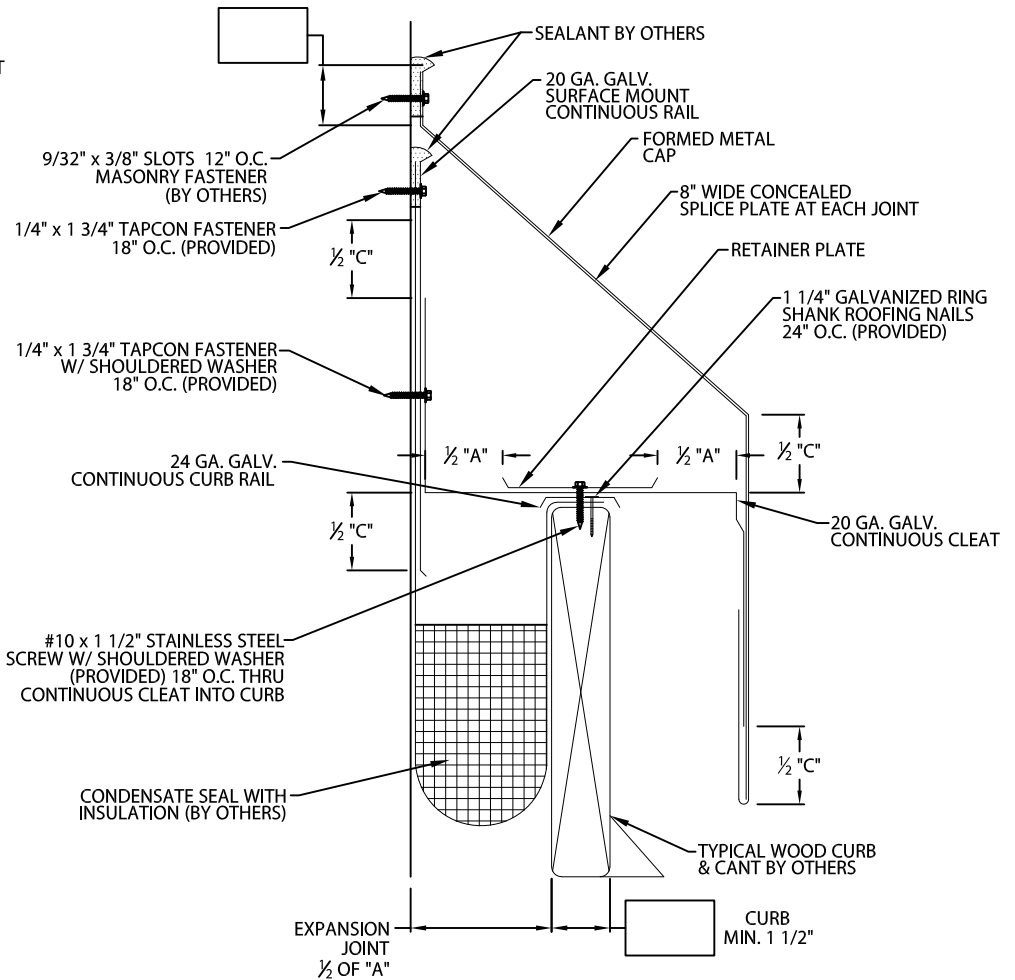
TOTAL EXPECTED MOVEMENT

IN AND OUT (LATERAL) "A"
(MAX. 6")

SIDE TO SIDE (LINEAL) "B"
(MAX. 6")

UP AND DOWN (VERTICAL) "C"
(MAX. 6")

NOTE:
RISE, FACE HEIGHT AND OVERALL WIDTH DETERMINED BY HICKMAN BASED UPON DIMENSIONS GIVEN FOR TOTAL EXPECTED MOVEMENT.



– WELDED MITERS AND ACCESSORIES
CHECK ONE REQUIRED (SURCHARGE) NOT APPLICABLE

– UNLESS OTHERWISE NOTED, FABRICATION OF MITERS AND ACCESSORIES ARE FURNISHED STANDARD UTILIZING A NON-PENETRATING QUICKLOCK JOINT, THEN FACTORY SEALED WATERTIGHT.

Fabrication will proceed only after receipt of signed print approval.

Print Approval:

Architect and/or contractor shall verify all dimensions, sizes and quantities. All products to be installed in strict accordance with printed instructions.

Approved by: _____

Date: _____

MATERIAL:

___ 24 GA. GALV. STEEL ___ .050" ALUMINUM
___ .040" ALUMINUM ___ .063" ALUMINUM
___ OTHER _____

COLOR: _____ FINISH: _____

QUANTITIES:

_____ LINEAL FEET 12'-0" LENGTHS
_____ OUTSIDE MITER(S) @ (_____)°
_____ INSIDE MITER(S) @ (_____)°
_____ RIGHT HAND ENDCAP INSERT(S) (AS SEEN FROM ROOF)
_____ LEFT HAND ENDCAP INSERT(S) (AS SEEN FROM ROOF)

PROJECT:

ARCHITECT:

ROOFING CONTRACTOR:

REPRESENTATIVE/DISTRIBUTOR:

Hickman Edge Systems

4 Commerce Way

Arden, NC 28704

Phone: 828-676-1700

www.hickmanedgesystems.com



DATE: 08/08/22

DRN BY: MLM

CKD BY: MM

SHT.# ____ OF ____

DWG# 64028-37152

A