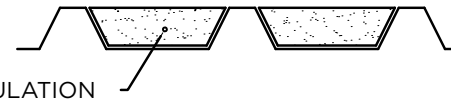
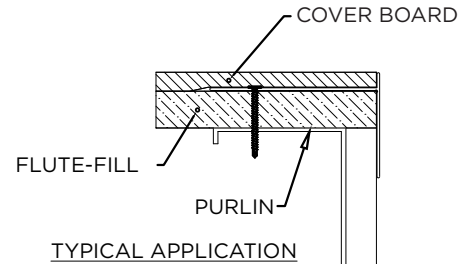
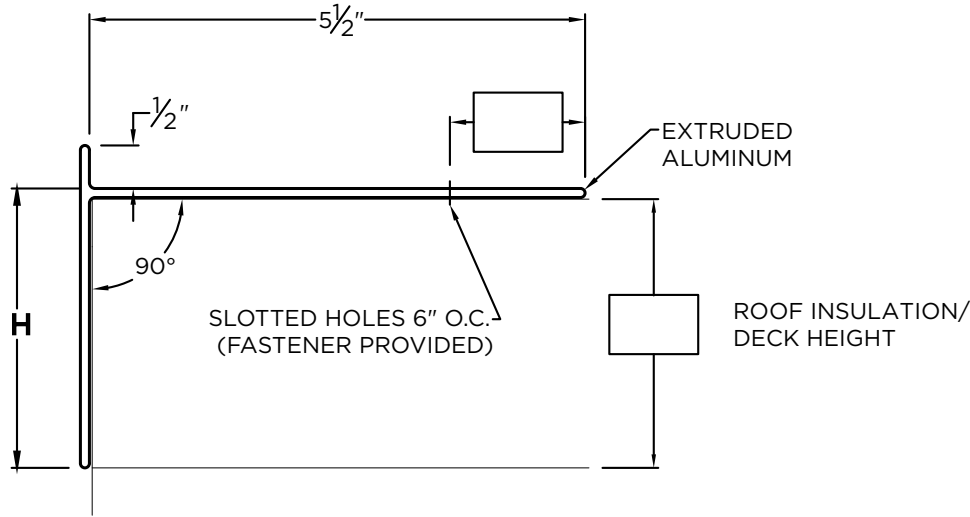




# VERSITRIM ELIMINAILER-T

## FLUTE-FILL (NON-PITCHED FLANGE)



### NOTES

- Fasteners provided will be insulation height plus 1" minimum. The substrate the fasteners are attaching to must be 22 ga. or greater. Typically fasteners are attached to purlin.
- Product should be installed per provided installation instructions

### PROJECT INFO

Project Name: \_\_\_\_\_

Architect: \_\_\_\_\_

Roofing Contractor: \_\_\_\_\_

#### Project Type:

By selecting this box you have verified and confirmed that dimensions, sizes, and quantities are correct. All products will be installed in strict accordance with printed instructions.

Date: \_\_\_\_\_

**Versico**  
Customer Service  
800-558-2162  
(Metal-Era)

SHT# 1 of 1

DATE: 12/06/21

DRN BY: MM

CKD BY: MM

DWG #: 18018-28996

REV: B

### DIMENSIONS

PRODUCT ID. NO.	H DIM	X DIM
<input type="checkbox"/> ELI-T-1555	1.5"	5.5"
<input type="checkbox"/> ELI-T-3055	3"	5.5"

### ADDITIONAL INFO

Please fill out the required info in the boxes located on the drawing above.

### QUANTITIES

\_\_\_\_\_ Lineal Feet (12'-0" Lengths)