

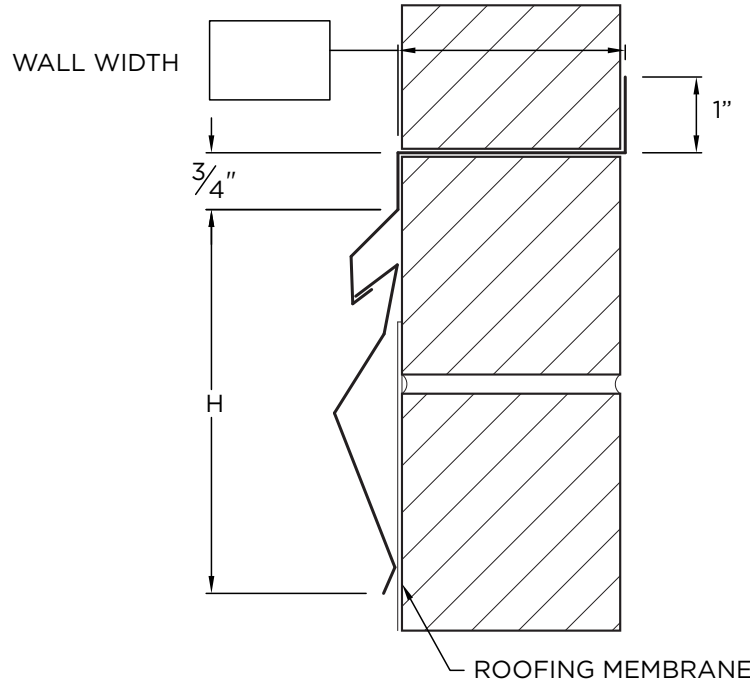


# 2-PIECE COUNTERFLASHING

THRU-WALL VERSION

## NOTES

- Pre-Notched Lap Joints
- No Fasteners Provided



## PROJECT INFO

Project Name: \_\_\_\_\_

Architect: \_\_\_\_\_

Roofing Contractor: \_\_\_\_\_

**Project Type:** \_\_\_\_\_

By selecting this box you have verified and confirmed that dimensions, sizes, and quantities are correct. All products will be installed in strict accordance with printed instructions.

Date: \_\_\_\_\_

**Versico**  
Customer Service  
800-558-2162  
(Metal-Era)

SHT# 1 of 1

DATE: 02/01/ 22

DRN BY: JJC

CKD BY: MM

DWG #: 18015-24500

REV: B

## DIMENSIONS

Choose H Dim and fill out wall width on drawing.

3.5" (CFTHRUWALL-350R)

4" (CFTHRUWALL-400R)

5" (CFTHRUWALL-500R)

## MATERIAL

- 24 Ga. Galv. Steel
- .040" Aluminum
- .050" Aluminum

Color: \_\_\_\_\_

Finish: \_\_\_\_\_

OTHER: \_\_\_\_\_

## QUANTITIES

\_\_\_\_\_ Lineal Feet (12'-0" Lengths)