

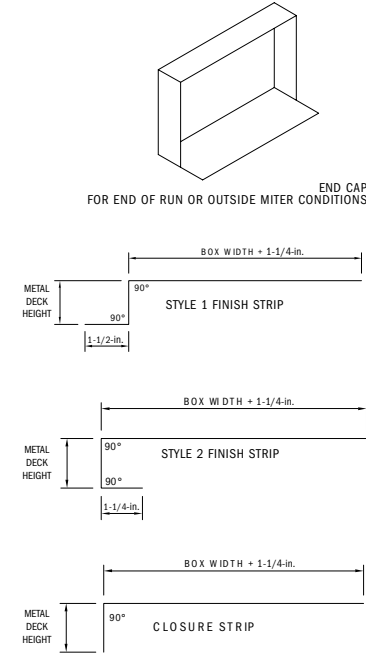
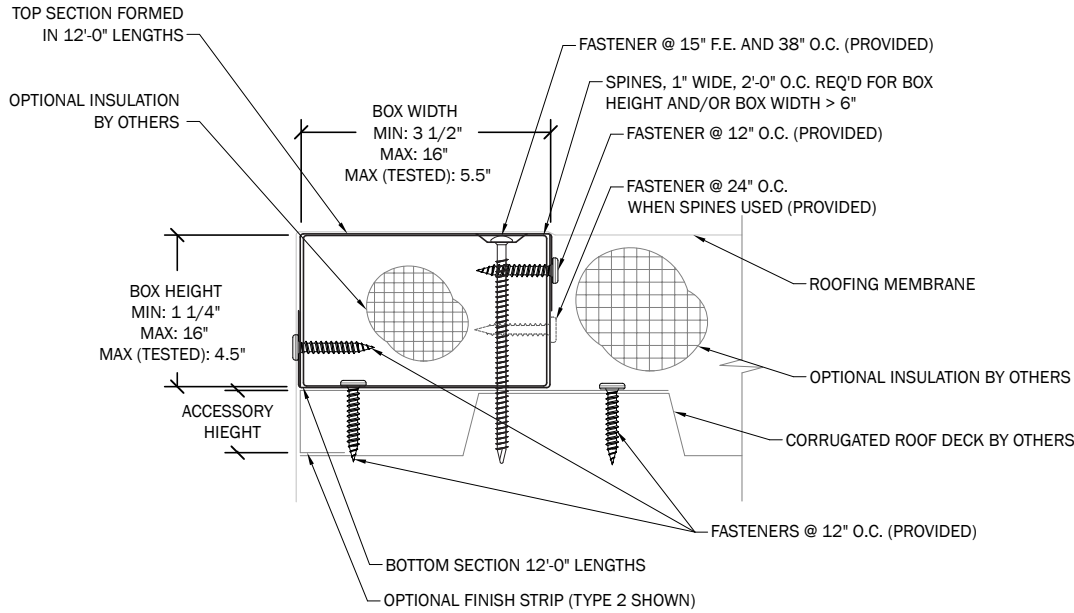


ELEVATE EDGEBOX RI

WOOD NAILER ALTERNATIVE

NOTES

- Pre-drill with 3/16" in. drill for masonry conditions
- Product should be installed per provided installation instructions
- Finish and closure strips are only used with metal deck applications
- 3" height maximum for use with a coping product on a parapet wall
- ANSI/SPRI/FM 4435/ES-1 Test Pressure up to 911 psf (Vertical) 526 psf (Horizontal)



DIMENSIONS

_____ Box Width (In Inches)
 _____ Box Height (In Inches)

MATERIALS

20 ga. Galv. Steel

SUBSTRATE

If substrate is not given, wood fasteners will be provided.

- Metal (_____ Metal Deck Height in Inches)
- Existing Wood Nailer
- Masonry

QUANTITIES

_____ Lineal Feet (12'-0" Lengths)
 _____ Right Endcaps
 _____ Left Endcaps
 _____ Finish Strip (Style 1) Lineal Feet
 _____ Finish Strip (Style 2) Lineal Feet
 _____ Closure Strip Lineal Feet

APPROVALS



ANSI/SPRI/FM 4435/ES-1
 Test Pressures listed in notes



PROJECT INFO

Project Name: _____
 Architect: _____
 Roofing Contractor: _____

Project Type:

By selecting this box you have verified and confirmed that dimensions, sizes, and quantities are correct. All products will be installed in strict accordance with printed instructions.

Date: _____

Elevate
 26 Century Blvd.
 Suite 205
 Nashville, TN 37214
 Contact your local
 Elevate representative.

SHT# 1 of 1
 DATE: **03/20/23**
 DRN BY: **PL**
 CKD BY: **MM**
 DWG #: 13018-36897
 REV: **C**